



ZAP Technical Instruction



The Smallest, Quietest & Safest Garage Door Operator in the World!



Wiring Instruction

Motor Wiring





Wiring Instruction for ZAP Controllers

- Series controller applicable to:
 - 800-II-G, 800-II, 8800-II, 8800-II-HP, 8850 std/fs

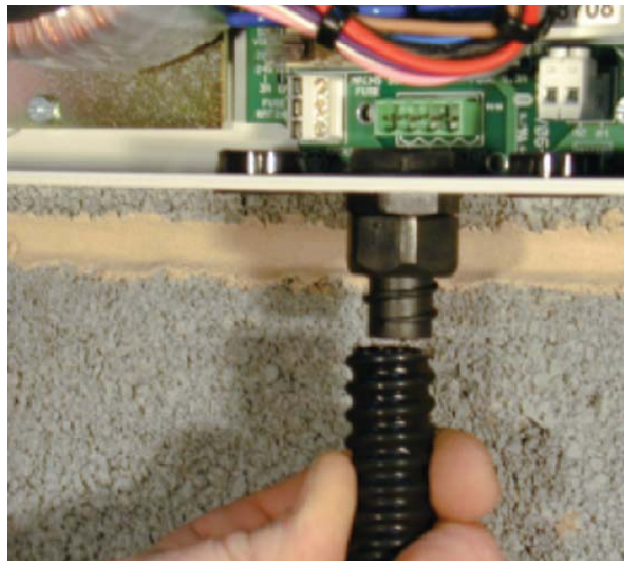


Wiring Instruction for ZAP Controllers

- Materials Needed:
 - Appropriate operator for door size(See model application chart)
 - Small technicians slotted screwdriver,
 - Provided ZAP 8m Motor Wire.



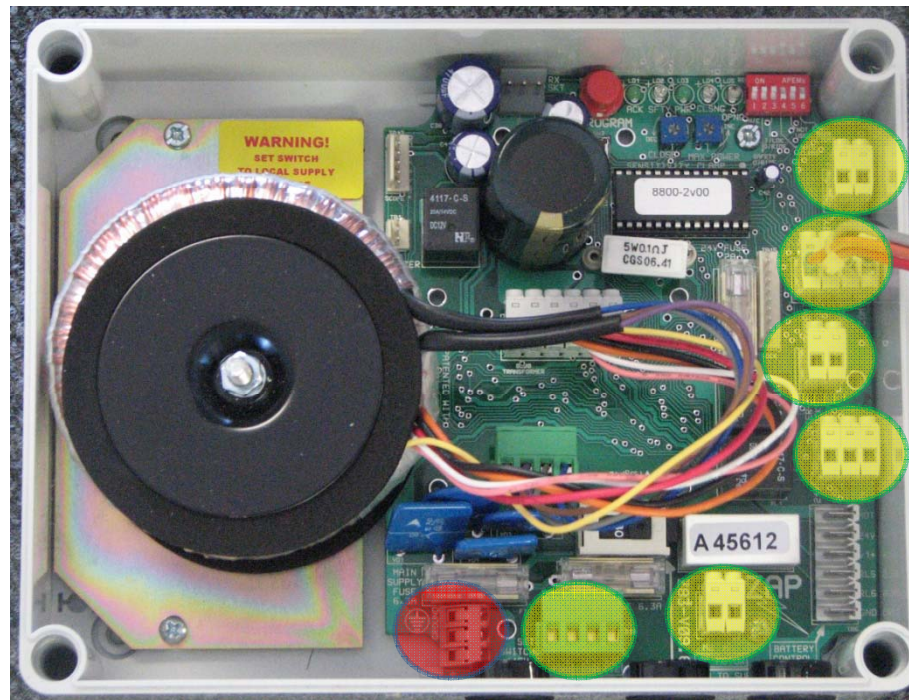
- Always utilize the pre-drilled holes in the bottom of the controller case to introduce wiring or conduit into the controller.



ZAP

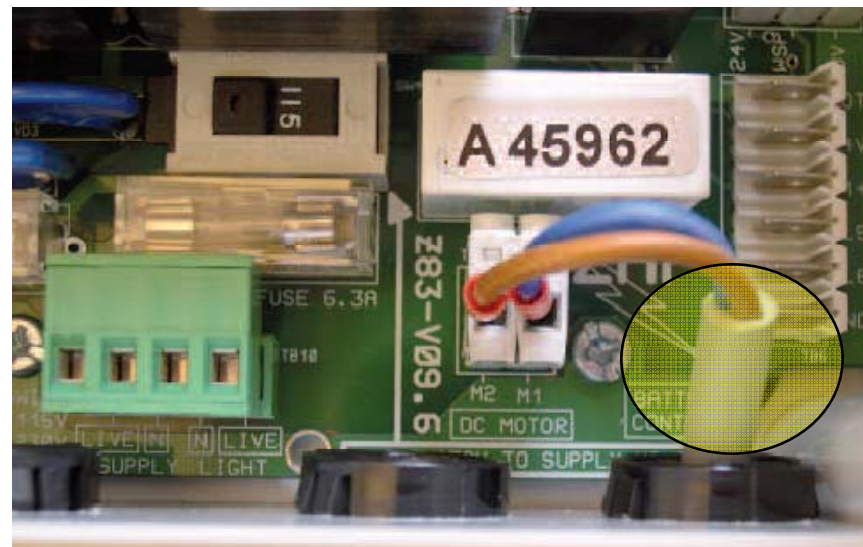
Light years ahead

- All wiring plugs are removable for easy wiring access with the exception of the grounding terminal.



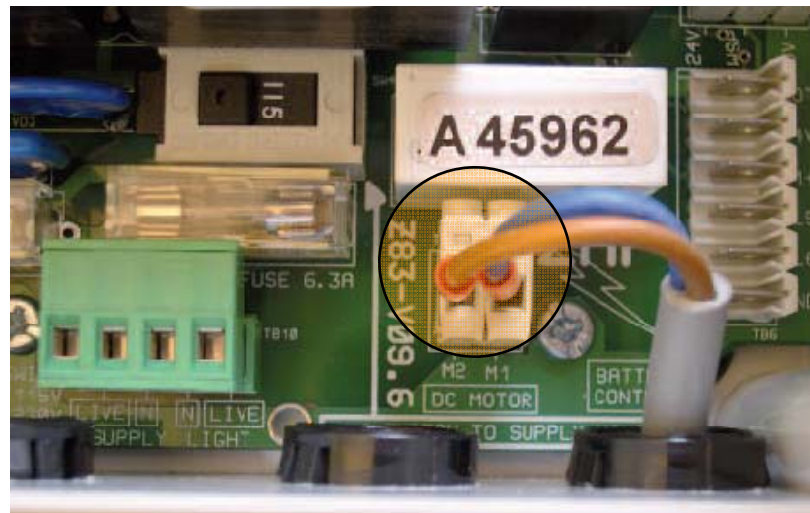


- Insert the provided motor wiring cable in through one of the pre-drilled holes provided in the bottom of the controller case.



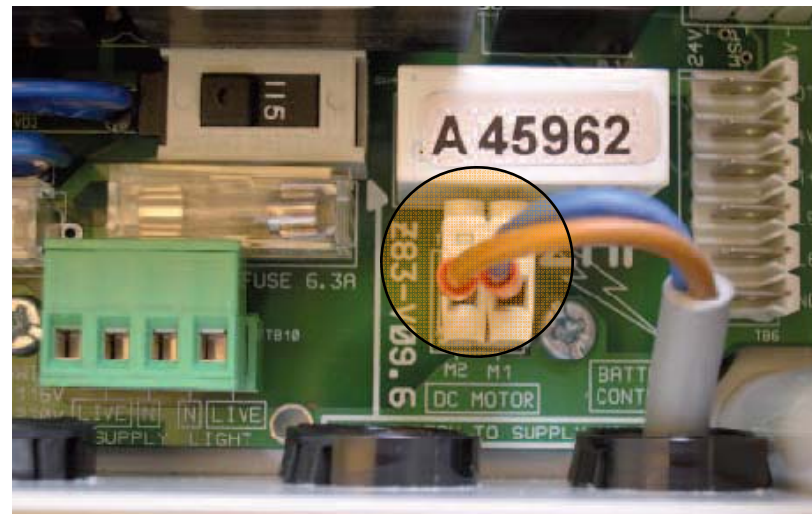


- Remove the plug labeled M1 and M2 Dc Motor.





- Insert the motor wires into the plug and tighten the connections using the small technicians screw driver.
 - If the operator is on the right side of the door then the Brown wire is placed in M1 (Right begins with R, Brown has an R in it)
 - If the operator is on the Left side of the door then the Blue wire is placed in M1 (Left begins with L, Blue has an L in it)
 - Do not fret about getting it wrong, it will be sorted during operator set up steps.





- Neatly work the motor cable to the jamb and secure along the way .
- Working the excess cable up the jamb, secure cable to Jamb or track with wire ties or other cable securing devices being careful not to cut or staple the wire.





- Loop and secure the excess motor cable to the upper part of the jamb or wall leaving enough excess to plug the wire into the motor.





- Plug the motor cable into the plug located on the motor in the case of the 800 series (Figure A) or onto the plug wire connector on the 8800 series. (Figure B)

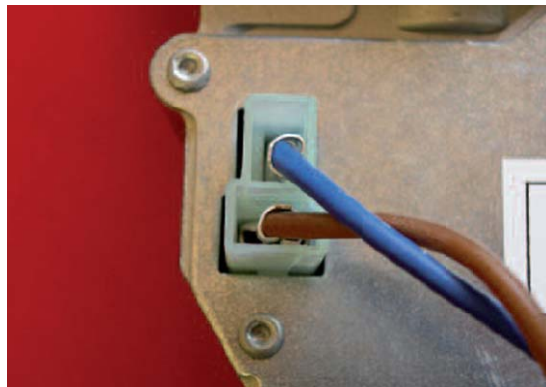


Figure A



Figure B