



# ZAP Technical Instruction



The Smallest, Quietest & Safest Garage Door Operator in the World!

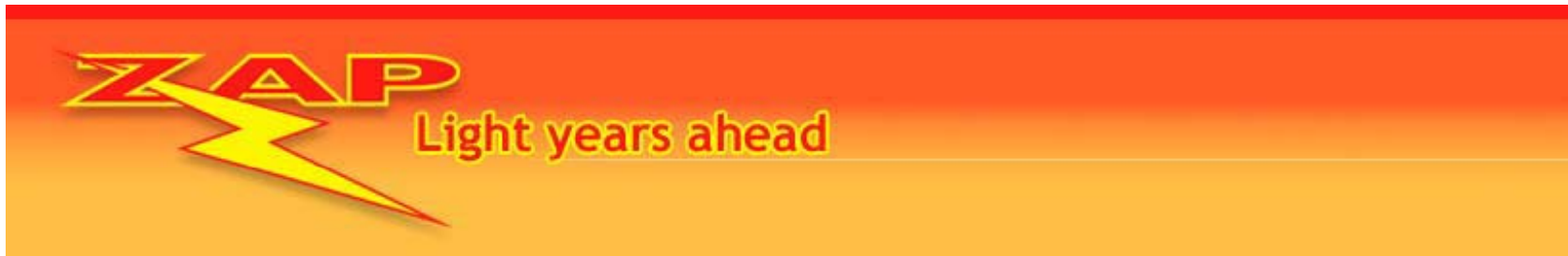


# Accessory Installation



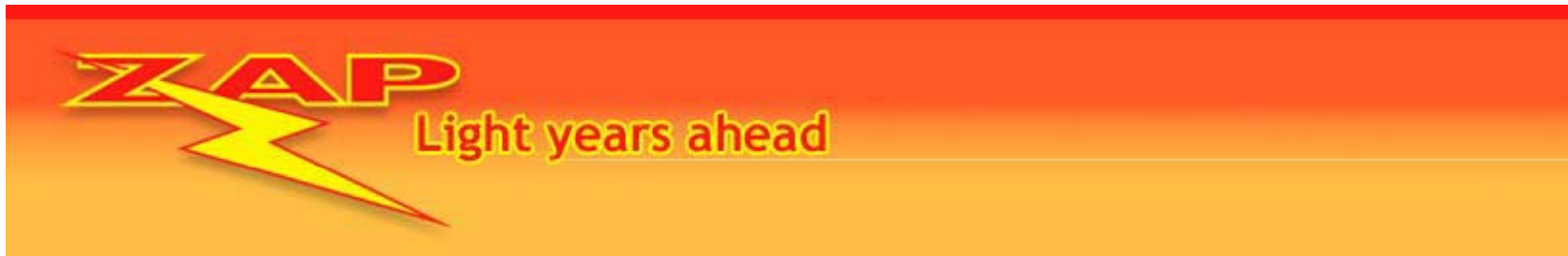
# Dock light/Courtesy Light Wiring and Function Commercial Controller





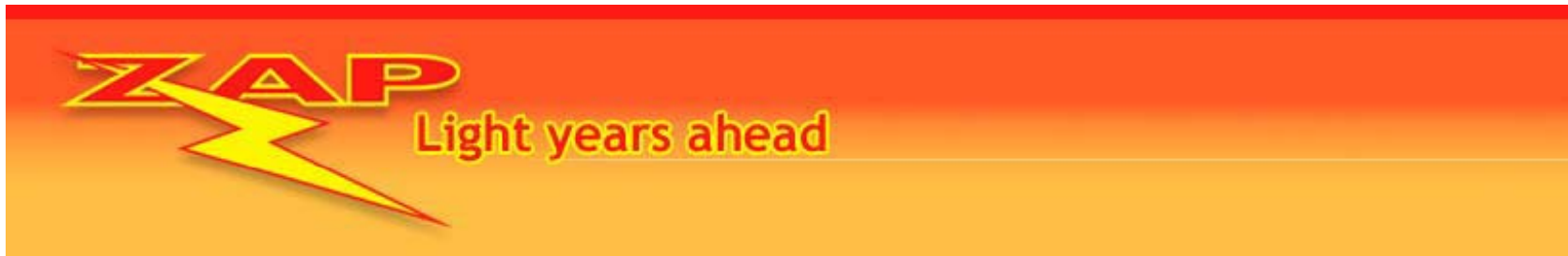
## Materials Needed

Dock Light or Interior Light from desired manufacturer  
Properly rated wiring for desired light



Series controller applicable to:

800-II-G, 800-II, 8800-II, 8800-II-HP, 8850



This installation is to be performed after the operator is installed and initial set up has been performed verifying successful installation and calibration of the operator.

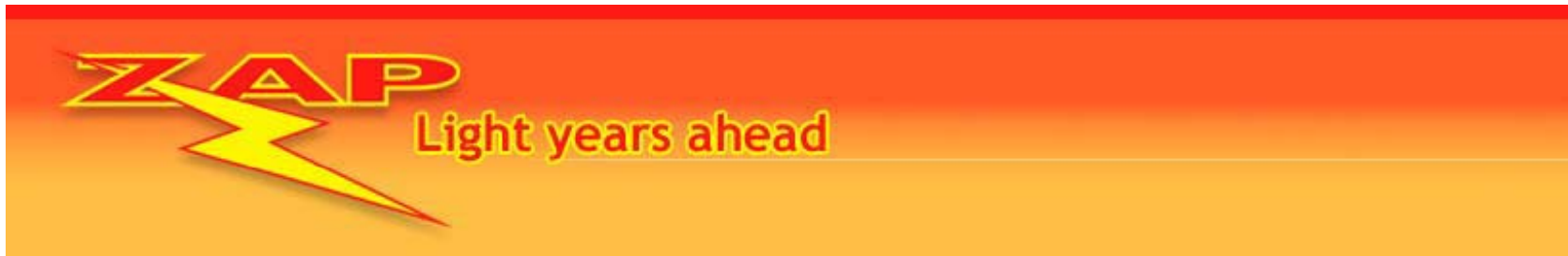


- Ensure the case lid cover is set to the service position and the wires are plugged onto the main board.





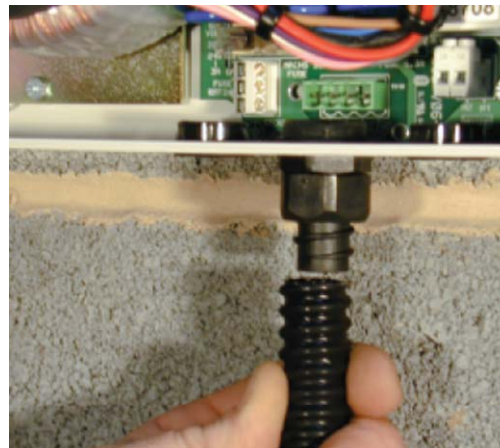
- Isolate the power supply before wiring any device into a ZAP Controller.



- ZAP Controls does not supply dock lights and or interior lighting equipment.

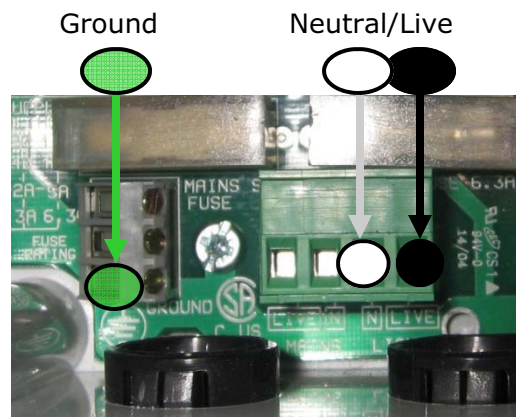


- After mounting desired light in desired position, introduce the light's wiring cable into the controller case through the provided pre-drilled holes in the bottom of the controller. If using conduit, always introduce the conduit through the pre-drilled holes in the bottom of the controller case as exemplified.





- Wire the ground, neutral and live wires as indicated .





- Set mode selector (DIP switch 6) to desired position.
- Switch on for on in any position but fully closed.
- Switch off for 3 minute timer after last cycle of operation.

