



ZAP Technical Instruction



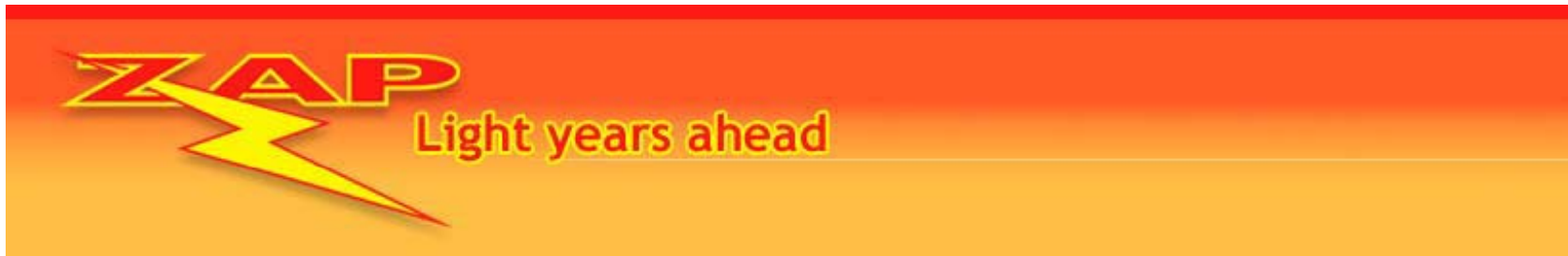
The Smallest, Quietest & Safest Garage Door Operator in the World!



Accessory Installation



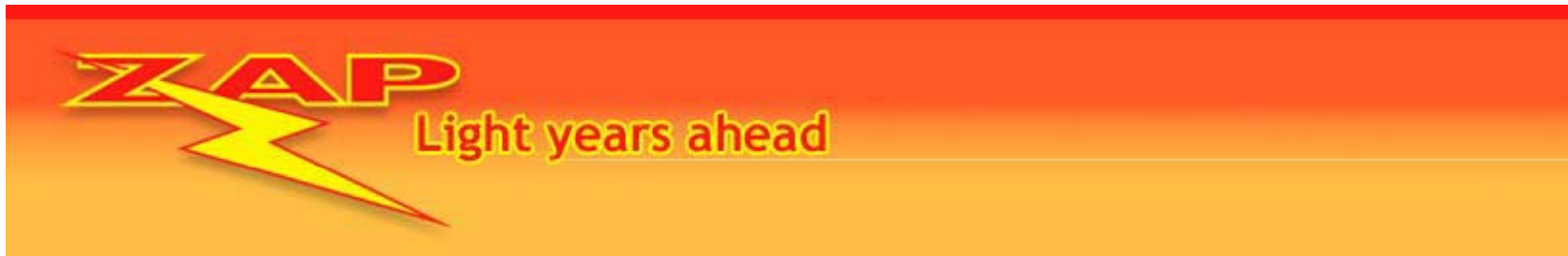
Courtesy Light Wiring and Function Residential Controller



Materials Needed

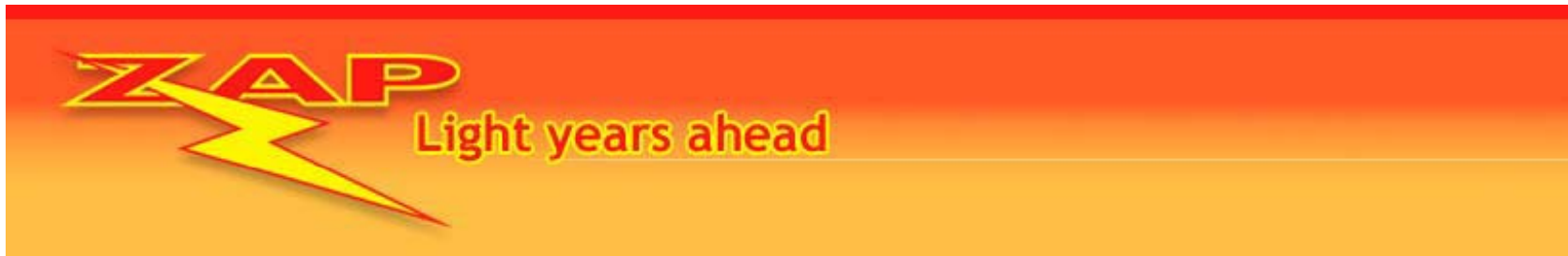
Interior Light from desired manufacturer

Properly rated wiring for desired light



Series controller applicable to:

800-R



This installation is to be performed after the operator is installed and initial set up has been performed verifying successful installation and calibration of the operator.



- Place the case lid into the service position.





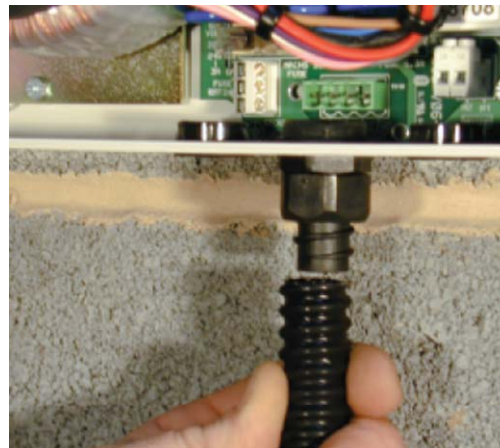
- Isolate the power supply before wiring any device into a ZAP Controller.



- ZAP Controls does not supply interior lighting equipment.

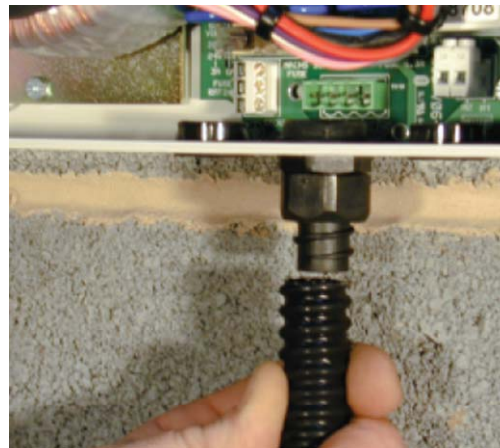


- If the Lighting output is to be used then the lighting wires should be routed by a qualified electrician to the orange connector at the bottom left hand side of the circuit board. A convenient conduit outlet is provided in the bottom of the case. The lighting circuit wiring should be rated at 3 Amps.



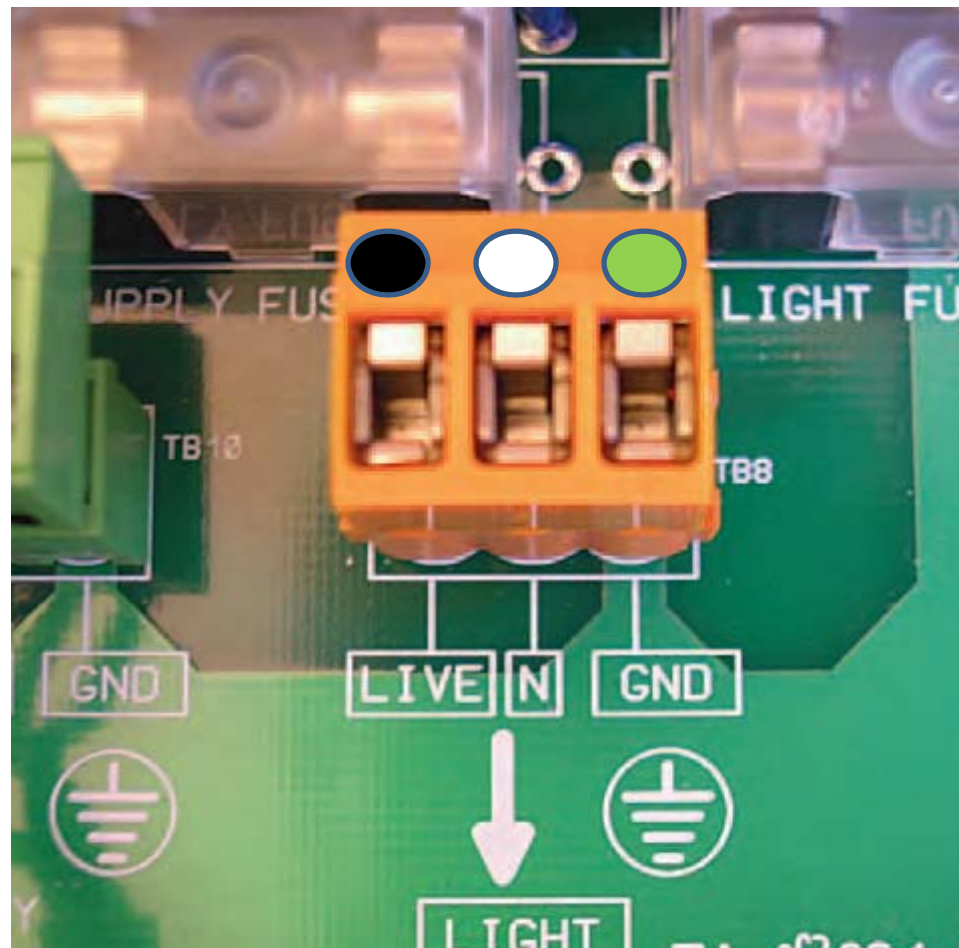


- After mounting desired light in desired position, introduce the light's wiring cable into the controller case through the provided pre-drilled holes in the bottom of the controller. If using conduit, always introduce the conduit through the pre-drilled holes in the bottom of the controller case as exemplified.





- Wire the ground, neutral and live wires as indicated .





- Set mode selector (DIP switch 6) to desired position.
- Switch on for on in any position but fully closed.
- Switch off for 3 minute timer after last cycle of operation.

